

# UFED 1.9.3 Release Notes



## Physical and file system extraction for Android's most popular version 2.3.x

SUPPORTING  
**7,734**  
DEVICE PROFILES

### Release Highlights:

#### Android

- Android's most popular version 2.3.x, and version 1.5, are now supported for physical, file system extraction, and decoding for various devices
- Unlock pattern decoding from an Android image file
- **38** new Android devices are now supported for physical extraction and **85** new Android devices are supported for file system extraction

#### BlackBerry®

- The BlackBerry support package can be stored on a USB flash drive in addition to an SD card
- **10** new BlackBerry devices are supported for physical extraction and decoding

#### iOS Devices

- iMessages can now be extracted from iOS devices running iOS 5.x, as part of the UFED logical extraction

Forensic Method	New	Total
Logical Extraction	48	3930
Physical Extraction*	53	1644
File System Extraction	99	1358
Password Extraction	1	802
*including GPS Extraction	201	7734

#### Unique Extraction Capabilities

Coming soon

**Samsung Galaxy S, SII & Tab**  
Android physical extraction and decoding, bypassing PIN/unlock pattern

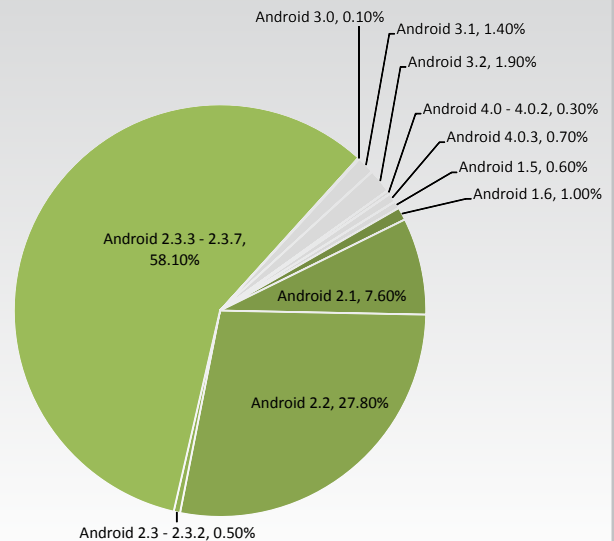
**Motorola**  
Android physical extraction and decoding, bypassing PIN/unlock pattern

**Nokia BB5**  
Physical extraction and decoding, bypassing user lock code

## Physical and File System Extraction for Android's Most Popular Version 2.3.x

Devices running Android's most popular version 2.3.x, and verion 1.5, are now supported for physical extraction and file system extraction. The extraction can be performed on rooted and non-rooted devices running those versions. Decoding is also supported for numerous devices. The physical and file system extraction are carried out via the UFED, while the decoding, analysis and reporting are carried out using the UFED Physical Analyzer.

Platform	Distribution	Cellebrite Supported
Android 1.5	0.6%	✓
Android 1.6	1.0%	✓
Android 2.1	7.6%	✓
Android 2.2	27.8%	✓
Android 2.3 - Android 2.3.2	0.5%	✓
Android 2.3.3 - Android 2.3.7	58.1%	✓
Android 3.0	0.1%	Logical extraction only
Android 3.1	1.4%	Logical extraction only
Android 3.2	1.9%	Logical extraction only
Android 4.0 -Android 4.0.2	0.3%	Logical extraction only
Android 4.0.3	0.7%	Logical extraction only



\*Source: <http://developer.android.com/resources/dashboard/platform-versions.html>

## Unlock Pattern Decoding From an Android Image File

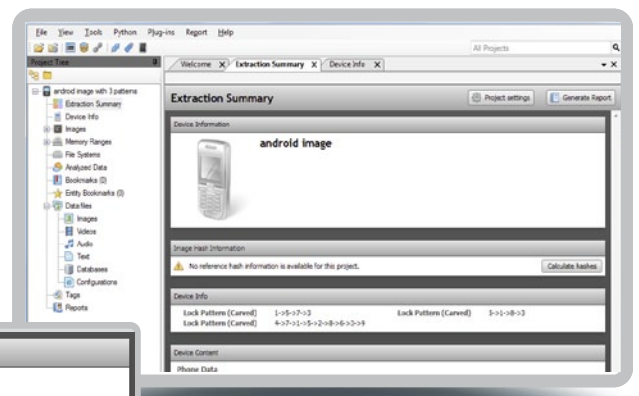
UFED Physical Analyzer introduces unlock pattern decoding from an Android image file using a new plug-in, "Android Unlock Pattern Carver". The new plug-in can be executed on image file created by the UFED device, JTAG, chip-off or other tools and for which decoding is not yet supported. The image file can either be of all device partitions or of user data partition only.

Once the unlock pattern is decoded, unlocking the device allows you to perform file system extraction via the UFED device and view the decoded data via the UFED Physical Analyzer.

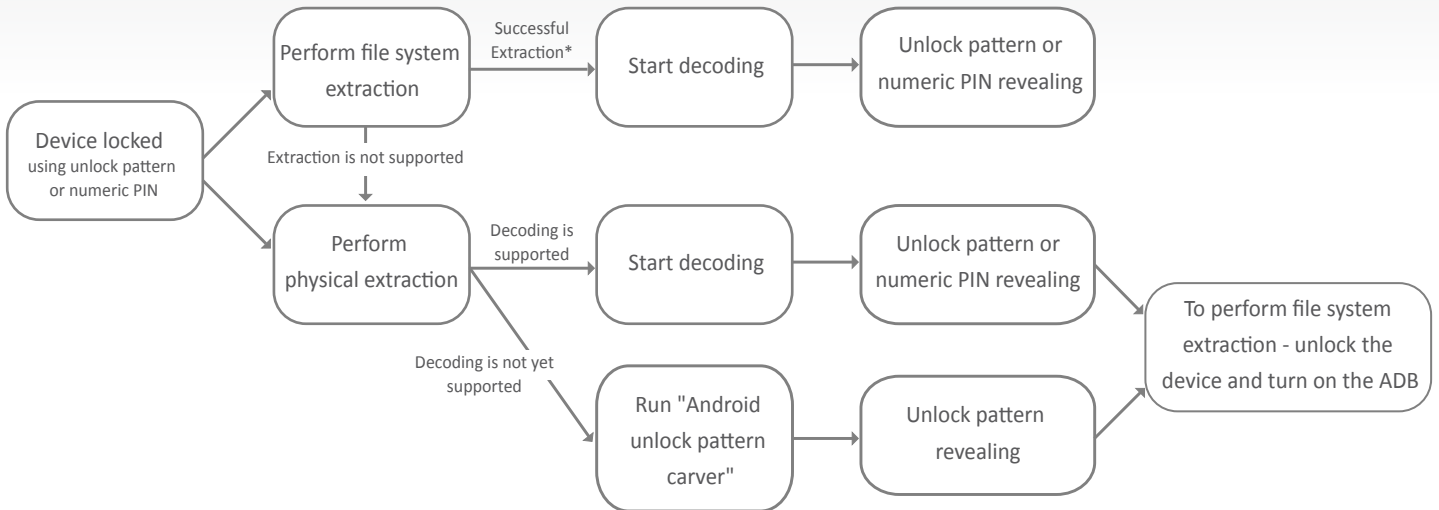
### Step-By-Step to decode the unlock pattern:

- Start the UFED Physical Analyzer
- Open an Android physical extraction using either drag and drop or the "Open Advanced" option
- Run the "Android Unlock Pattern Carver" plug-in
- The unlock pattern is presented in the device info

Device Info		Lock Pattern (Carved)	
Lock Pattern (Carved)	1->5->7->3	Lock Pattern (Carved)	5->1->8->3
Lock Pattern (Carved)	4->7->1->5->2->8->6->3->9		



## Unlock Pattern and PIN Decoding from Locked Android Devices



\*ADB (Android Debugging Bridge) is enabled for supported phones.

For more information please refer to the Android physical extraction FAQ's.

## New on Cellebrite's Website

- **BlackBerry® Physical Extraction – FAQ** – The page covers Frequently Asked Questions, related to BlackBerry physical extraction and decoding
- **New videos** – Cellebrite has released new “how-to” videos presenting BlackBerry licensing activation and BlackBerry physical extraction. The videos are now available both on the [Cellebrite website](#) and on our [YouTube channel](#).

## 48 New Devices Supported via Logical Extraction

<b>Alcatel</b>	⋮	Vodafone 555 Blue
<b>Apple</b>	⋮	iPod Touch 3G
<b>Archos</b>	⋮	80 G9 (Android), 101 G9 (Android)
<b>Chinese phones</b>	⋮	ES65, K-Touch N650
<b>HTC</b>	⋮	C110e Radar, A510c Wildfire S (Android), A510e Wildfire S (Android), S510b Rhyme, PI86100 Titan II, T7380 Touch Pro 2
<b>Huawei</b>	⋮	M920 Activa 4G (Android), U8350 Boulder (Android)
<b>K-Touch</b>	⋮	ES65, N650
<b>LG CDMA</b>	⋮	VM-510 Rumor Touch, VM-701 Optimus Slider (Android), L45C Optimus Net (Android)
<b>LG GSM</b>	⋮	LG-C360, P690f Optimus Net(Android)
<b>Motorola CDMA</b>	⋮	MB867 Milestone X2 (Android), XT894 Droid 4 (Android), MZ617 XYBoard 10.1 (Android)
<b>Motorola iDen</b>	⋮	i867 (Android)
<b>Nokia GSM</b>	⋮	C2-00, C2-05, 710 Lumia, C6-00.1
<b>Philips</b>	⋮	X518 Xenium
<b>Samsung CDMA</b>	⋮	SCH-U365, SCH-R390, SCH-R930 (Android)
<b>Samsung GSM</b>	⋮	SGH-i717 Galaxy Note (Android), SGH-i847 Rugby Smart (Android), GT-E2220 Ch@t 222, GT-S5690 Galaxy Xcover (Android), GT-N7000 Galaxy Note, GT-I8350 Omnia W, GT-I9250 Galaxy Nexus (Android), GT-i8150T Galaxy Wonder (Android)
<b>Sony Ericsson</b>	⋮	CK13i TXT, Xperia MK16i Pro (Android)
<b>UMX</b>	⋮	MXC-560, MXC-570
<b>ZTE CDMA</b>	⋮	N910 (Android)
<b>ZTE GSM</b>	⋮	Racer II, T11 MaxiPhone

## 53 New Devices Supported via Physical Extraction

<b>Acer</b>	⋮	E320 Liquid Express (Android)*
<b>BlackBerry CDMA</b>	⋮	8130 Pearl, 8230 Pearl Flip, 8330 Curve, 8350i Curve, 8830, 9670 Style
<b>BlackBerry GSM</b>	⋮	8220 Pearl Flip, 8310 Curve, 9100 Pearl, 9550 Storm 2
<b>Chinese phones</b>	⋮	SUNUP TK007, Nokia N99, Fly E146, DAXIAN T7000
<b>HTC</b>	⋮	PG59100 myTouch 4G Slide (Android)*, S510e Desire S (Android)*, S710e Incredible S (Android)*, T7373 Evo Shift 4G (Android)*, PI39200 Sensation XL (Android)*, PG58100 Sensation 4G (Android)*, PG58130 Sensation XE (Android), PG86100 Evo 3D (Android)*

## 53 New Devices Supported via Physical Extraction (Cont.)

<b>Huawei</b>	⋮ M650 (Android)*, U8110 Pulse Mini (Android)*, U8652 (Android)*
<b>LG CDMA</b>	⋮ MS-695 Optimus M+ (Android), AS-855 Optimus (Android)*
<b>LG GSM</b>	⋮ P505 (Android)*, P505R (Android)*, C729 DoublePlay (Android)*, P925g Optimus 3D (Android)*
<b>Motorola CDMA</b>	⋮ XT610 Droid Pro (Android), MB855 Photon 4G (Android), XT865 Droid Bionic (Android), MB867 Milestone X2 (Android)*, MB870 Droid X2 (Android)
<b>Motorola GSM</b>	⋮ A953 Milestone 2 (Android), XT610 Droid Pro (Android)
<b>Motorola iDen</b>	⋮ i886 (Android), i412
<b>Pantech</b>	⋮ P9070 Burst (Android)
<b>Samsung CDMA</b>	⋮ SPH-D705 Epic 2 (Android)*, SPH-D710 Epic 4G Touch (Android)*, SPH-M930 Transform Ultra (Android)*, SCH-R940 Galaxy S Lightray 4G (Android)*
<b>Samsung GSM</b>	⋮ SGH-I777 Galaxy S II (Android)*, GT-I9020a Nexus S (Android)*, GT-I9100 Galaxy S II (Android)
<b>Sony Ericsson</b>	⋮ Xperia SK17i Mini Pro (Android)
<b>ZTE CDMA</b>	⋮ D930 (Android)
<b>ZTE GSM</b>	⋮ P736E Atlas (Android), P736V (Android)*

\* Android extraction and decoding

## 99 New Devices Supported via File System Extraction

<b>Acer</b>	⋮ S100 Liquid E (Android), E320 Liquid Express (Android)
<b>Alcatel</b>	⋮ Juke (Android), OT-908 One Touch (Android), 909B One Touch (Android), OT-990 One Touch (Android)
<b>BlackBerry GSM</b>	⋮ 8310 Curve, 8520 Curve, 9100 Pearl
<b>HTC</b>	⋮ Nexus One, Wildfire S (Android), PG59100 myTouch 4G Slide (Android), A333 Wildfire (Android), A510c Wildfire S (Android), A510e Wildfire S (Android), P510e Flyer (Android), S510e Desire S (Android), S710e Incredible S (Android), A7373 Evo Shift 4G (Android), T7373 Evo Shift 4G (Android), PH39100 Vivid (Android), PI39200 Sensation XL (Android), PG58100 Sensation 4G (Android), PG58130 Sensation XE (Android), PG76240 Wildfire (Android), PH85110 Amaze 4G (Android), PG86100 Evo 3D (Android), PI86100, PG86300 Evo 3D (Android), PG86310 Evo 3D (Android)
<b>Huawei</b>	⋮ M650 (Android), M835 Ascend (Android), U8110 Pulse Mini (Android), U8652 (Android)
<b>Kyocera CDMA</b>	⋮ C5120 Milano (Android), M9300 Echo (Android)
<b>LG CDMA</b>	⋮ VS-660 Vortex (Android), LS-670 Optimus S (Android), VM-670 Optimus (Android), MS-690 Optimus M (Android), MS-695 Optimus M+ (Android), US-740 (Android), VS-761 (Android), AS-855 Optimus (Android), LS-855 Marquee (Android), MS-910 Esteem (Android), LG-7100X
<b>LG GSM</b>	⋮ LG-A340, P505 (Android), P505R (Android), LG509TN (Android), C729 DoublePlay (Android), P925g Optimus 3D (Android), P970 (Android), P500h

## 99 New Devices Supported via File System Extraction (Cont.)

<b>Motorola CDMA</b>	⋮ V3c (Telus), MB853 Electrify (Android), A854 Milestone (Android), A855 Droid (Android), MB855 Photon 4G (Android), MB867 Milestone X2 (Android), MB870 Droid X2 (Android)
<b>Motorola GSM</b>	⋮ A953 Milestone 2 (Android), MB520 Diablo (Android)
<b>Motorola iDen</b>	⋮ i1x Titanium (Android), i886 (Android), i940 (Android)
<b>Nokia GSM</b>	⋮ Lumia 710.1
<b>Pantech</b>	⋮ P9060 Pocket (Android), P9070 Burst (Android)
<b>Samsung CDMA</b>	⋮ SCH-R270U, SCH-U365, SPH-D705 Epic 2 (Android), SPH-D710 Epic 4G Touch (Android), SPH-D720 Nexus S 4G (Android), SCH-R910M (Android), SCH-R920 Attain (Android), SPH-M930 Transform Ultra (Android), SCH-R940 Galaxy S Lightray 4G (Android)
<b>Samsung GSM</b>	⋮ SGH-T759 Exhibit 4G (Android), SGH-I777 Galaxy S II (Android), GT-S5360 Galaxy Y (Android), GT-S5830 Cooper (Android), GT-N7000 Galaxy Note, GT-i8350 Omnia W, GT-I9020a Nexus S (Android), GT-I9100 Galaxy S II (Android)
<b>Sanyo CDMA</b>	⋮ SCP-8600 Zio (Android)
<b>Sharp</b>	⋮ EC40 (Android)
<b>Sony Ericsson</b>	⋮ Xperia ST15i Mini (Android), Xperia SK17a Mini Pro (Android), Xperia SK17i Mini Pro (Android), Xperia ST17i Active (Android), Xperia ST18i Ray (Android), Xperia WT19i Live (Android)
<b>ZTE CDMA</b>	⋮ X500 Score (Android), D930 (Android)
<b>ZTE GSM</b>	⋮ CARL (Android), P736V (Android)

## 1 New Device Supported via Password Extraction

<b>LG CDMA</b>	⋮ LG-7100X
----------------	------------

## Cellebrite UFED Software Download and Upgrade Instructions



UFED 1.1.9.3 Firmware Update



Firmware Update Instructions



UFED Physical Analyzer 2.4.3.2



Android Physical Extraction FAQ



UFED Phone Detective 1.1.3



UFED Supported Devices

## BlackBerry®



BlackBerry Support Package



UFED BlackBerry physical activation manual



Request for BlackBerry physical license



UFED Physical Analyzer BlackBerry decoding activation manual

### mycellebrite

Don't forget to register your license at [My.Cellebrite.com](http://My.Cellebrite.com).  
Registration guarantees that you receive vital information and updates relevant to your UFED System.





## Contact Us

### HEADQUARTERS

Cellebrite Mobile Synchronization Ltd.  
94 Derech Em Hamoshavot St.  
Petah Tikva 49130, P.O.B 3925  
Israel  
Tel. 972 3 926 0900  
Fax. 972 3 924 7104

### USA

Cellebrite USA Corp.  
266 Harristown Rd., Ste. 105  
Glen Rock, NJ 07452  
U.S.A.  
Tel. (201) 848 8552  
Fax. (201) 848 9982

### GERMANY

Cellebrite GmbH.  
Vattmannstrasse 1in  
33100 Paderborn  
Germany  
Tel. +49 (0) 52 51 54 64 90  
Fax. +49 (0) 52 51 54 64 9 49

### CHINA

Sun (China) Co. Ltd.  
2209 Tomson Commercial Building,  
710 Dong Fang Road, Pudong,  
Shanghai, 200122  
China  
Tel. +86 21 6165 2212  
Fax. +86 21 6165 2274