



# UFED CHINEX

Extracting Forensic Data from Chinese Mobile Phones





## UFED CHINEX

# Extracting Forensic Data from Chinese Mobile Phones

Rising to the challenge of the overwhelming quantity of Chinese-manufactured mobile phones flooding the international market, Cellebrite's UFED CHINEX offers an end-to-end solution for the extraction and decoding of vital forensic data from these devices.

UFED CHINEX is a field-ready solution, which extends and enhances the UFED family of products, confirming Cellebrite's position as market leader.

## At a Glance

- Physical extraction from thousands of Chinese mobile phones
- Based on Cellebrite's proprietary boot loaders
- State-of-the-art decoding within UFED Physical Analyzer including call logs, contacts, SMS, MMS, video, images and more
- Deleted data extraction capability
- User password extraction
- Forensically sound method
- Automatic pin-out recognition

### Important!

Cellebrite's CHINEX solution leverages a third-party hardware interface, while the forensically sound extraction and decoding is fully implemented by Cellebrite with its own boot loaders. Decoding chain and plug-ins are also the result of extensive Cellebrite research and development.

## The UFED CHINEX Kit

Cellebrite presents a total solution:

The UFED CHINEX kit contains everything you need for field or lab usage. Cellebrite takes care of the smallest detail, providing a complete solution and leaving you worry-free to concentrate on your investigation. The kit contains:

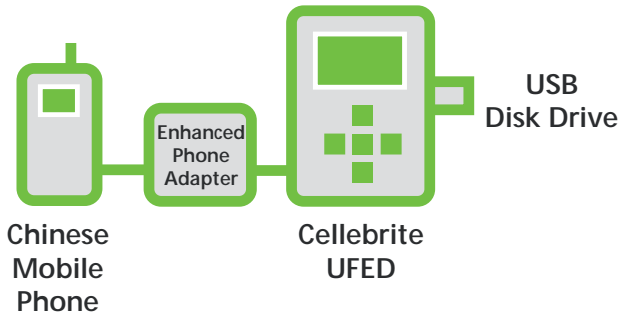
- ✓ Enhanced phone adapter
- ✓ Adapter cables
- ✓ A large selection of individual connectors
- ✓ USB cable
- ✓ Quick User Guide



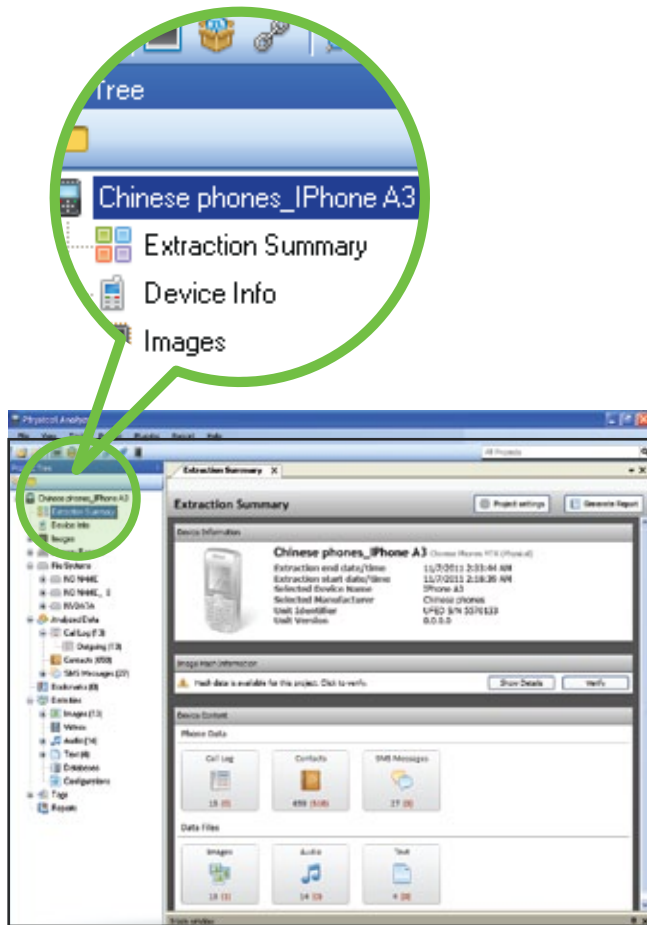
## How it Works

Using the UFED CHINEX is simple and efficient:

The CHINEX connectivity box acts as the interface between the phone and the UFED. The UFED enables the automatic pin-out identification. By selecting "Chinese phones physical extraction" in the UFED menu the phone pin-out will be detected and the extraction to a USB disk drive will start automatically.



At the end of the process, open the extracted file using the UFED Physical Analyzer for enhanced decoding process and to generate a report.



## Why UFED CHINEX Should be Your System of Choice

UFED CHINEX is part of the Cellebrite UFED family of products, recognized by industry experts as the industry standard in mobile forensics.

- This adds substantially to the thousands of mobile devices already supported by the UFED
- Forensically sound - based on proprietary bootloaders to ensure that evidence from mobile devices is extracted in a forensically sound manner
- Enhanced decoding - UFED Physical Analyzer is the leading mobile forensic physical analysis and reporting tool available on the market. With a powerful decoding, intuitive user interface, instant search, advanced highlights engine, superb hex viewer, report generator and more

## Chinese Phones in the Market

It is estimated that China produced more than 600 million phones during the past year. With most of them being exported, at least 25 percent of the phones used worldwide today are made in China.



Sales of these devices has skyrocketed mainly because they are cheaper, frequently offer more features than commonly available on recognized brands and are widely distributed.

Accordingly, law enforcement agencies worldwide have been waiting eagerly for a system which can extract evidentiary data from these phones. CHINEX now perfectly fulfills the need.

## About Cellebrite

Founded in 1999 by a team of highly experienced Telecom and mobile telephony professionals, Cellebrite is a global company known for its technological breakthroughs in the cellular industry. Over the past 12 years Cellebrite has been working with over 150 wireless carriers worldwide including Verizon Wireless, AT&T, Sprint/Nextel, T-Mobile, O2 and many more.

A world leader and authority in mobile data technology, Cellebrite established its mobile forensic division, introducing a new line of products targeted to the mobile forensics industry.

Using advanced extraction methods and analysis techniques, Cellebrite's Universal Forensic Extraction Device (UFED) is able to extract and analyze data from thousands of mobile devices, including feature phones, smartphones and GPS devices.

In use by military, law enforcement, governments and intelligence agencies across the world, Cellebrite's UFED is the tool of choice for thousands of forensic specialists in police, Special Forces, tax fraud, customs, border control, and anti-terror investigations in more than 60 countries.

[www.cellebrite.com](http://www.cellebrite.com)  
[sales@cellebrite.com](mailto:sales@cellebrite.com)

### HEADQUARTERS

Cellebrite Ltd.  
94 Em Hamoshavot St.  
Petah Tikva 49130  
Israel  
Tel: +972 3 926 0900  
Fax: +972 3 924 7104

### USA

Cellebrite USA Corp.  
266 Harristown Rd., Ste. 105  
Glen Rock, NJ 07452  
USA  
Tel: +1 201 848 8552  
Fax: +1 201 848 9982

### GERMANY

Cellebrite GmbH  
Vattmannstrasse 1  
33100 Paderborn  
Germany  
Tel: +49 52 51 54 64 90  
Fax: +49 52 51 54 64 9 49